



EBit60 VET

All the power you need



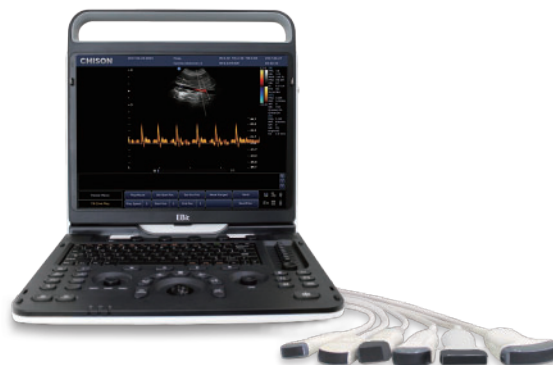


Mobility Innovative de

By working with doctors and medical professionals globally for 20 years, Chison is pleased to debut its latest portable ultrasound : the EBit60 VET. The EBit60 VET provides all the power you need for today's challenging clinical environment, yet remain ultra-portable, ultra-affordable. With its cutting-edge imaging technologies, precise and intuitive workflow, ergonomic and eco-friendly design, versatile transducers for all applications from top to toe, we firmly believe the EBit60 VET to be the very best portable ultrasound in its class today.

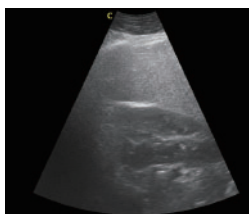


sign



FHI

- FHI is an innovative harmonic imaging technology that uses multiple transmission and receiving methods based on the animal's size and weight. This allows the EBit60 VET to maintain image resolution when imaging larger animal.
- Traditional Tissue Harmonics and Phased Harmonics compromise image quality and resolution when penetration is increased.
- Chison's FHI technology greatly improves diagnostic abilities and clinical confidence in larger animal.



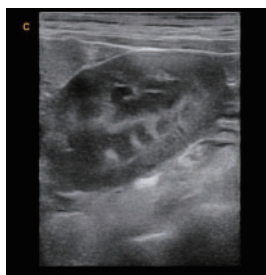
OFF



ON

X-contrast

- The EBit60 VET allows one-touch user-adjusted contrast resolution based upon differences in tissue density.
- Enhance, Normal, and Suppress settings increase or decrease contrast resolution, based on the tissue type and user preference.



Normal

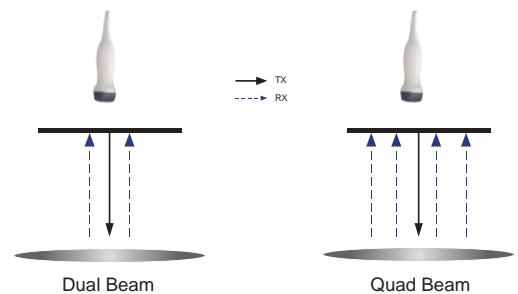


Enhance

Advanced Technologies

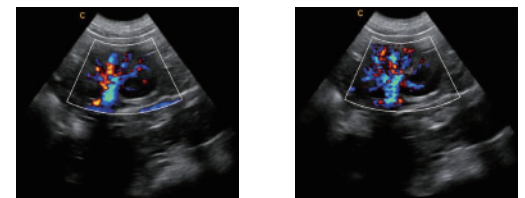
Q-beam

- Compared to the traditional dual-beam former on most ultrasound machines, the EBit60 VET uses quad-beam technology for ultrasound signal receiving.
- Doubles the volume of signals received over traditional methods, increasing image resolution and generating more accurate images.
- Produces higher frame rates, ensuring better diagnostic confidence and efficiency, especially for moving organs.



Q-flow

- This adaptive color detection technology can automatically adjust the assessment of color signal and noise according to different tissues.
- As a result, color sensitivity of low-velocity flow is significantly enhanced.

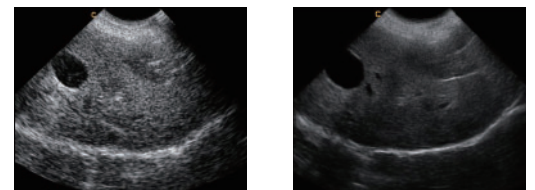


OFF

ON

Q-image

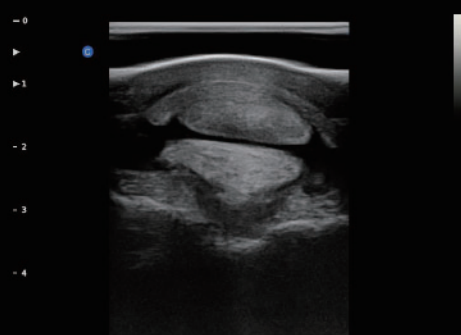
- These innovative algorithms have strengthened the image enhancement results significantly.
- Advanced chipset is used to ensure fast frame rate.



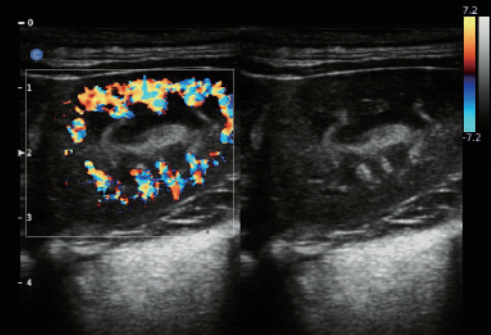
OFF

ON

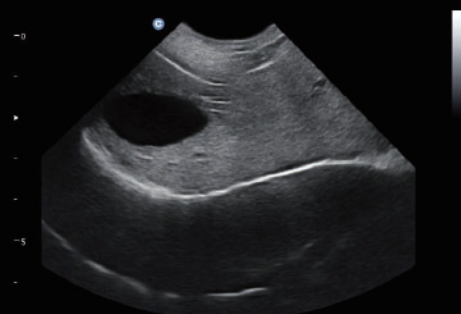
Premium Image Quality



Equine Tendon, B Mode



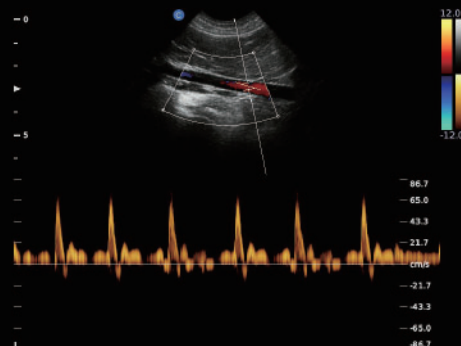
Canine Kidney, B/BC Mode



Canine Liver, B Mode



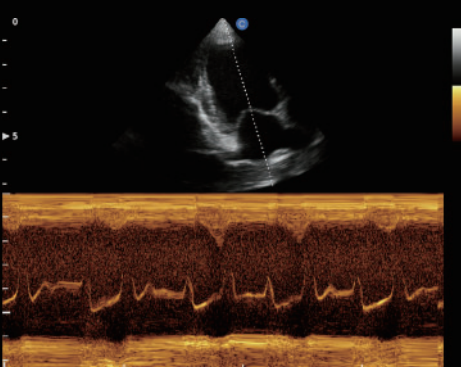
Canine Kidney, B Mode



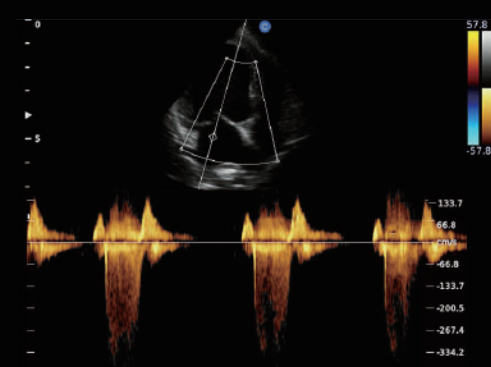
Canine Aorta, PW Mode



Canine Cardiac, B Mode



Canine TV Regurgitation, M Mode



Canine Cardiac, CW Mode

Официальный
дистрибьютор
в РФ



RUSSIAN
EXPORT
COMPANY

Тел: (495) 972 2418
(495) 972 9214
info@rus-exp.com
Сайт: rus-exp.com

Wide Range of Probe Selection



2.0MHz-8.0MHz Phased array
P6-E



4.0MHz-12.0MHz Micro-Convex
MC6-E



7.0MHz-18.0MHz(with FHI)Linear
L12-E



4.0MHz-15.0MHz Linear
L7-E



4.0MHz-10.7MHz Micro-Convex
MC5-E



2.0MHz-6.8MHz Micro-Convex
MC3-E



2.0MHz-6.8MHz Convex
C3-E



1.5MHz-5.3MHz Phased array
P3-E



4.0MHz-15.0MHz Trans-Rectal
L7R-E



4.0MHz-10.0MHz Linear Rectal
L7V-E

CHISON MEDICAL IMAGING CO., LTD.

Sales & Service Contact Address:

No. 9 Xin Hui Huan Road, New District, Wuxi, Jiang Su Province, China214028

TEL: 0086-510-85310593 / 85310937 **FAX:** 0086-510-85310726 **EMAIL:** export@chison.com.cn

We reserve the right to make changes to this catalogue without prior notice
Please contact our local dealer for the latest information.